

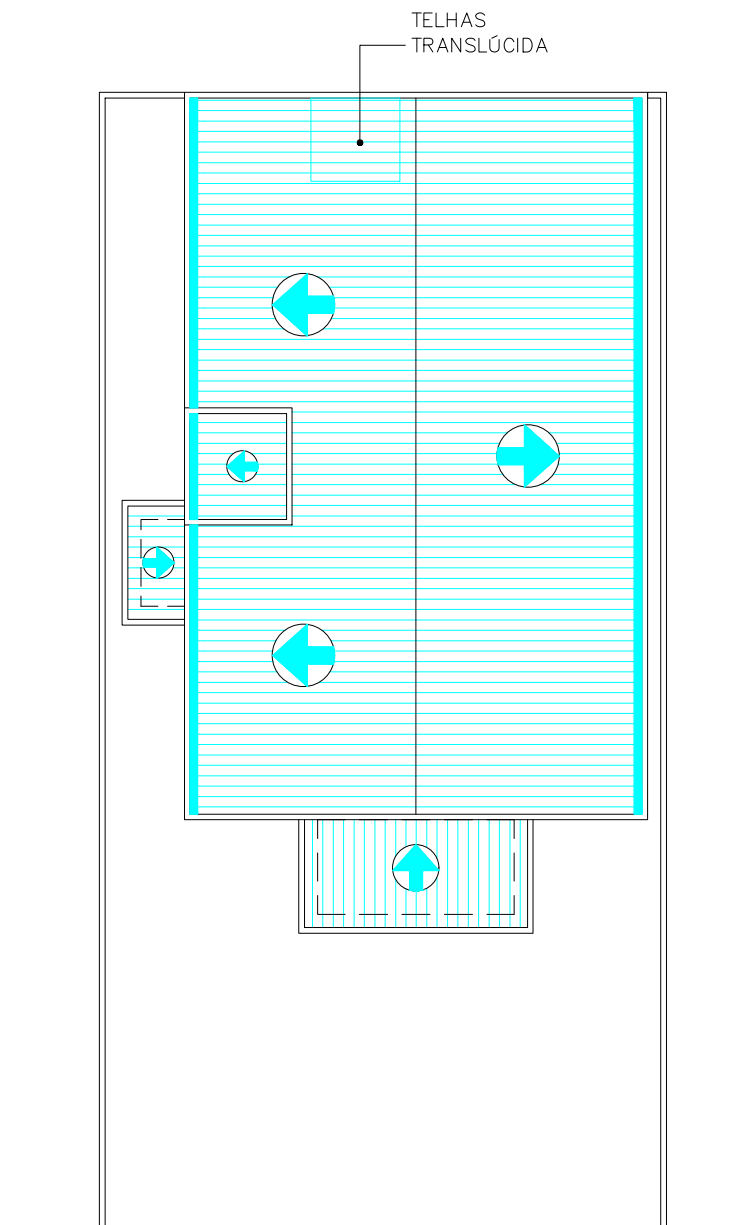
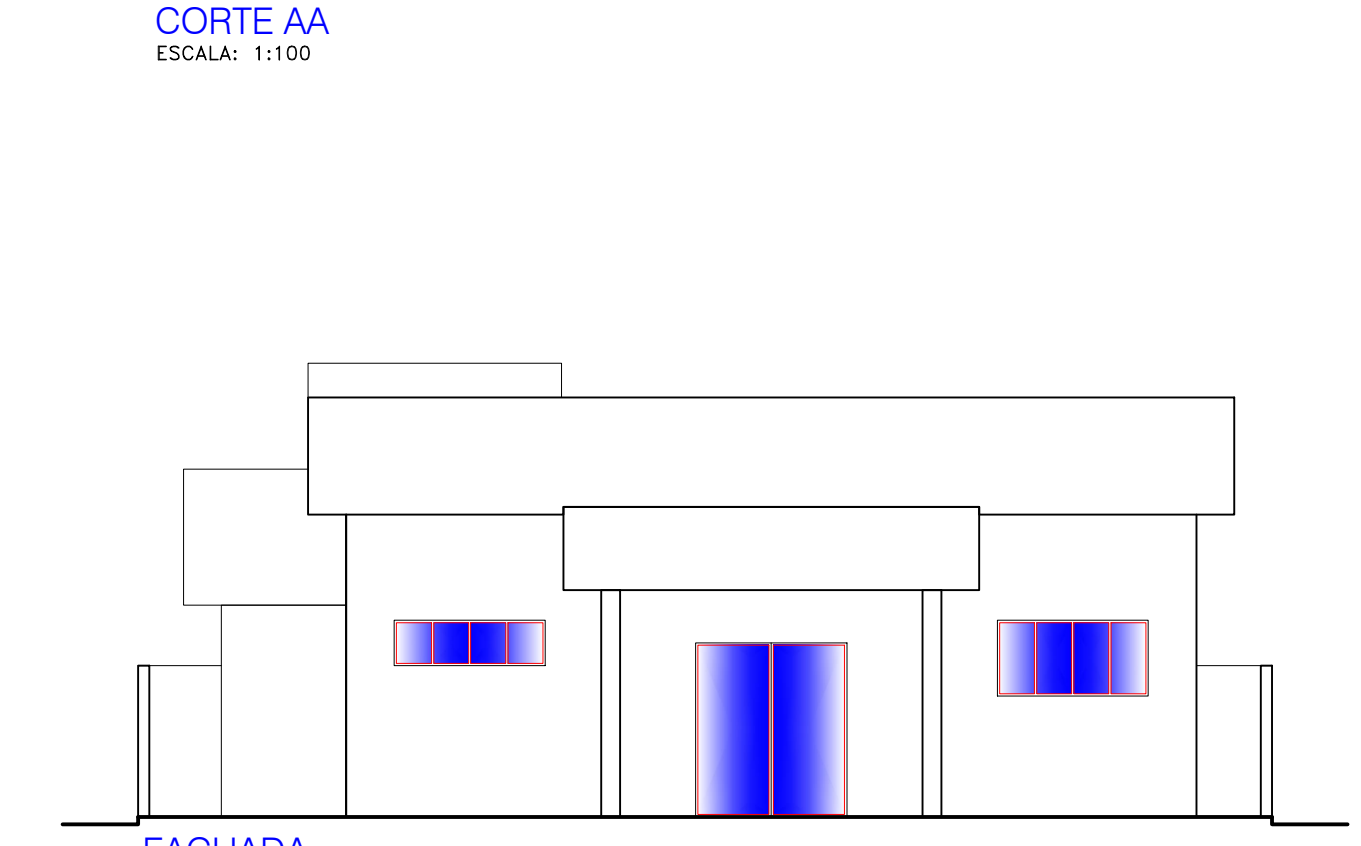
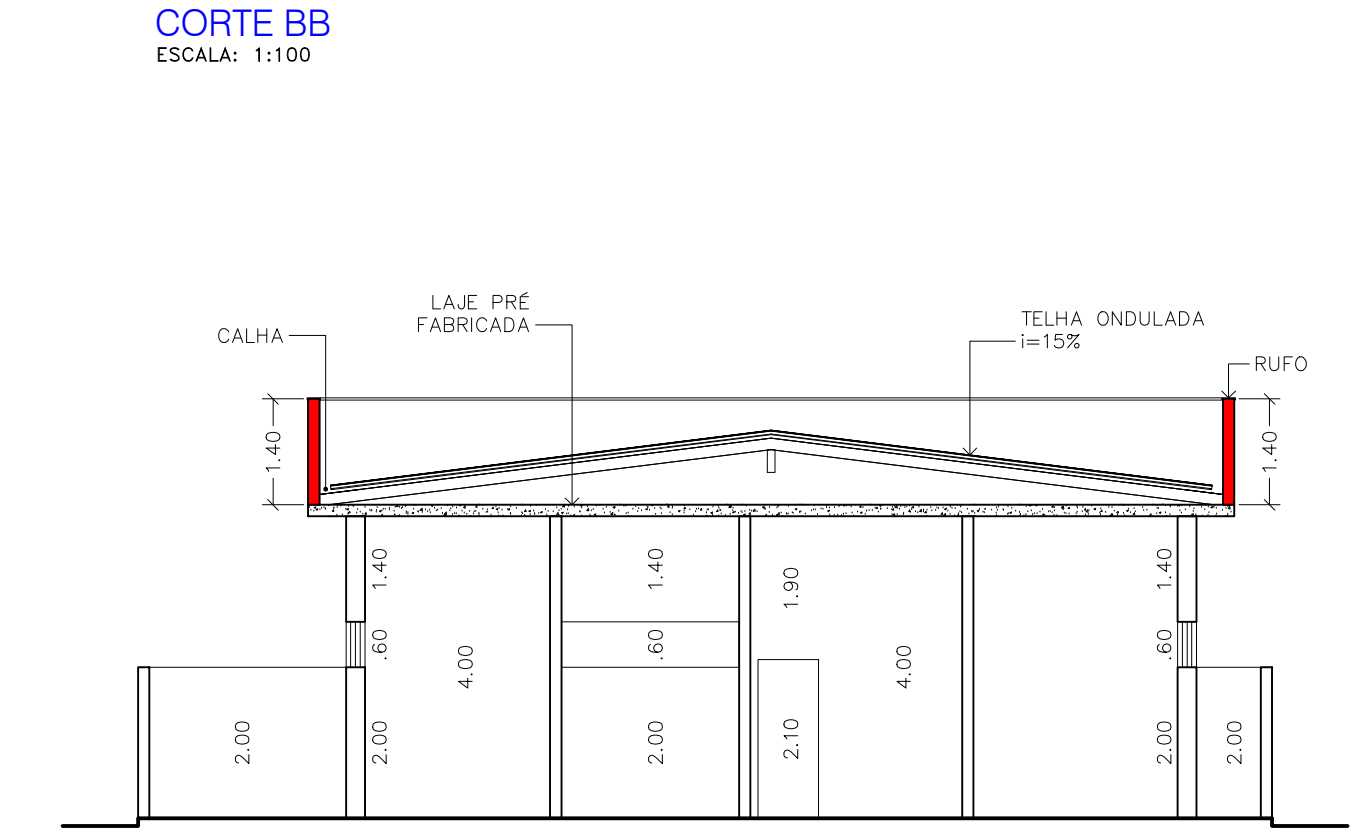
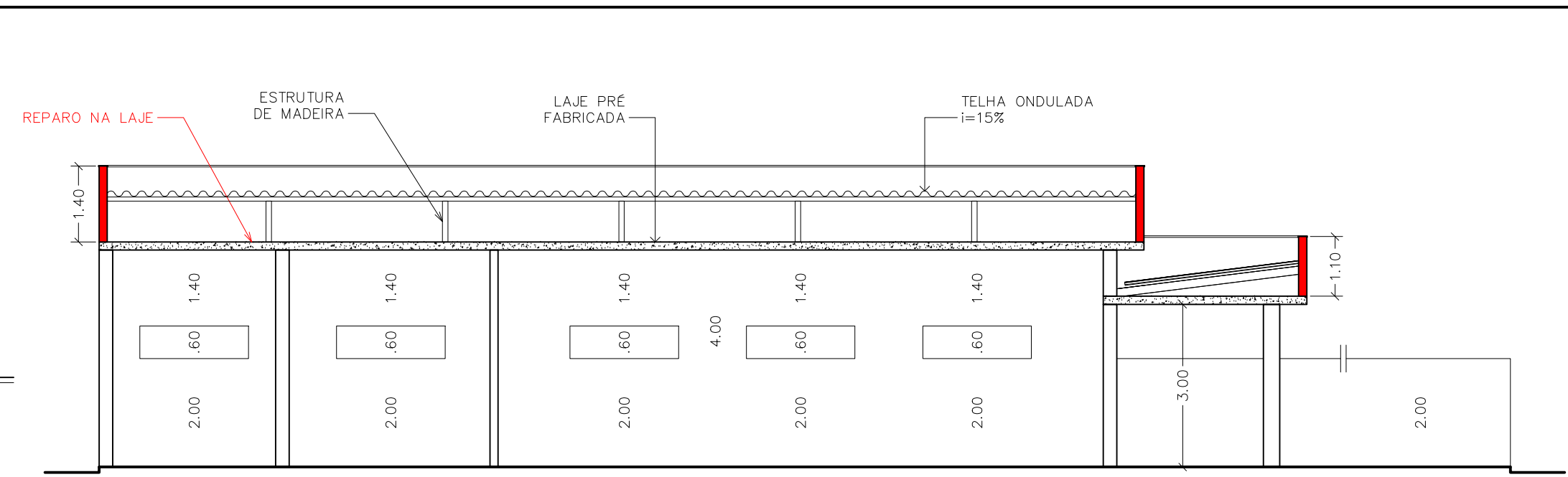
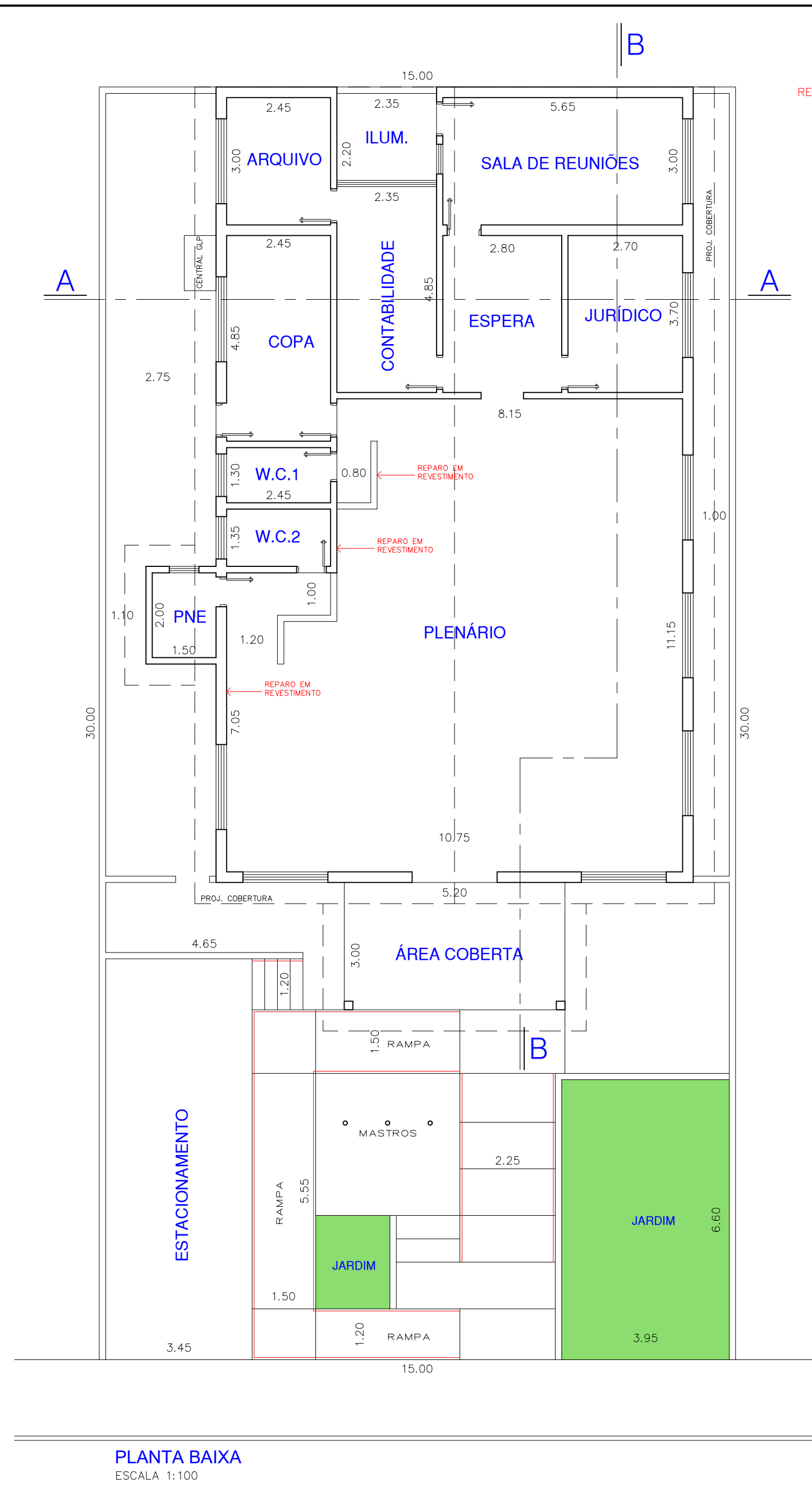
Layer	Penas	Cor
01	0.20	0.00
02	0.20	0.00
03	0.20	0.00
04	0.20	0.00
05	0.20	0.00
06	0.20	0.00
07	0.20	0.00
08	0.20	0.00
09	0.20	0.00
10	0.20	0.00
11	0.20	0.00
12	0.20	0.00
13	0.20	0.00
14	0.20	0.00
15	0.20	0.00
16	0.20	0.00
17	0.20	0.00
18	0.20	0.00
19	0.20	0.00
20	0.20	0.00
21	0.20	0.00
22	0.20	0.00
23	0.20	0.00
24	0.20	0.00
25	0.20	0.00
26	0.20	0.00
27	0.20	0.00
28	0.20	0.00
29	0.20	0.00
30	0.20	0.00
31	0.20	0.00
32	0.20	0.00
33	0.20	0.00
34	0.20	0.00
35	0.20	0.00
36	0.20	0.00
37	0.20	0.00
38	0.20	0.00
39	0.20	0.00
40	0.20	0.00
41	0.20	0.00
42	0.20	0.00
43	0.20	0.00
44	0.20	0.00
45	0.20	0.00
46	0.20	0.00
47	0.20	0.00
48	0.20	0.00
49	0.20	0.00
50	0.20	0.00
51	0.20	0.00
52	0.20	0.00
53	0.20	0.00
54	0.20	0.00
55	0.20	0.00
56	0.20	0.00
57	0.20	0.00
58	0.20	0.00
59	0.20	0.00
60	0.20	0.00
61	0.15	0.00
62	0.20	0.00
63	0.20	0.00
64	0.20	0.00
65	0.20	0.00
66	0.20	0.00
67	0.20	0.00
68	0.20	0.00
69	0.20	0.00
70	0.20	0.00
71	0.20	0.00
72	0.20	0.00
73	0.20	0.00
74	0.20	0.00
75	0.20	0.00
76	0.20	0.00
77	0.20	0.00
78	0.20	0.00
79	0.20	0.00
80	0.20	0.00
81	0.20	0.00
82	0.20	0.00
83	0.20	0.00
84	0.20	0.00
85	0.20	0.00
86	0.20	0.00
87	0.20	0.00
88	0.20	0.00
89	0.20	0.00
90	0.20	0.00
91	0.20	0.00
92	0.20	0.00
93	0.20	0.00
94	0.20	0.00
95	0.20	0.00
96	0.20	0.00
97	0.20	0.00
98	0.20	0.00
99	0.20	0.00
100	0.20	0.00

ESC PLOT = 1:100

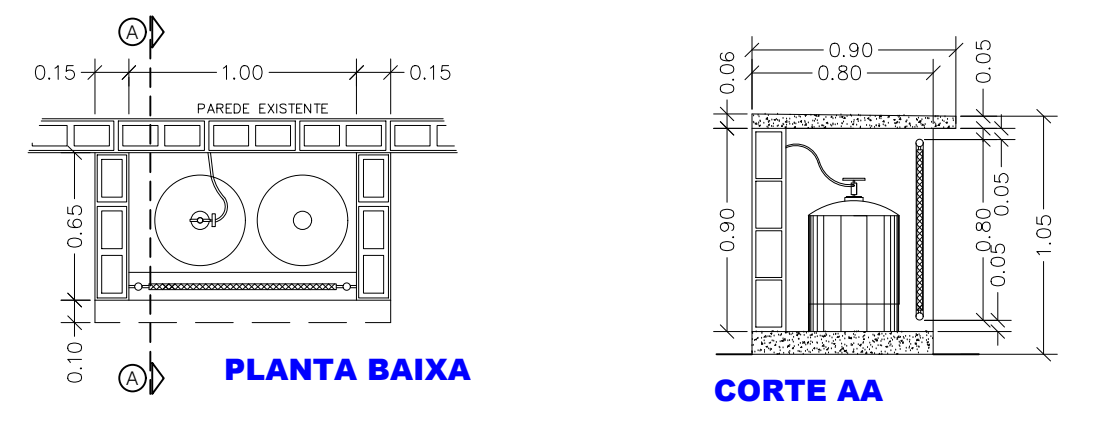
SUFITE  
VEGETAL

DESENHOS EM GERAL  
MARCELO FRANÇA

FONE: (17) 3442-2521 - 9705-0975  
AV. DOS ARNALDOS, Nº 1066, PAV. SUPERIOR, SALA 11, CENTRO  
FERNANDÓPOLIS-SP.



**DETALHE - CENTRAL DE GLP**



**LEGENDA:**

- EXISTENTE
- CONSTRUIR

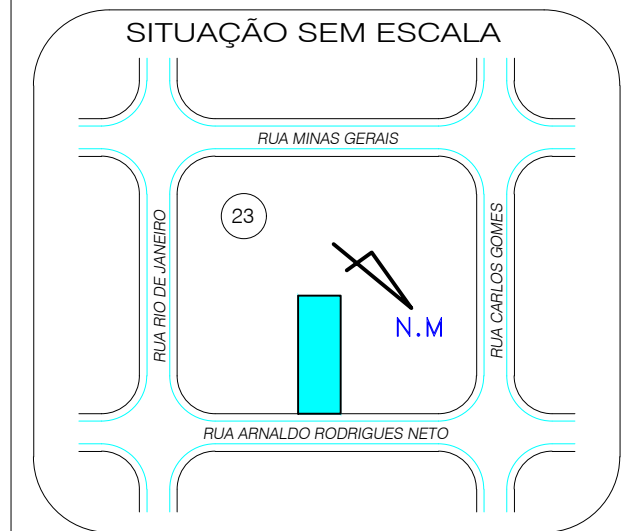
**PROJETO COMPLETO F. 1/1**

ASSUNTO  
**COBERTURA E REFORMA DA CÂMARA MUNICIPAL**

LOCAL  
RUA ARNALDO RODRIGUES NETO, Nº 315, CENTRO

CIDADE  
SÃO JOÃO DAS DUAS PONTES - S.P.

PROPRIETÁRIO:  
**CÂMARA MUNICIPAL DE SÃO JOÃO DAS DUAS PONTES**  
CNPJ: 56.368.061/0001-60



DECLARO QUE A APROVAÇÃO DESTES PROJETOS NÃO IMPLICA POR PARTE DA P.M. NO RECONHECIMENTO DO DIREITO DE PROPRIEDADE DO TERRENO

**OSVALDO RODRIGUES DOS SANTOS**  
PRESIDENTE

ÁREAS	M2
TERRENO	450,00
CONSTRUÇÃO	224,60

**JOSÉ EDEMIR GIANOTTO**  
ENGENHEIRO CIVIL  
CREA 0600781743

APROVAÇÃO